

汽车起重机 / Truck Crane

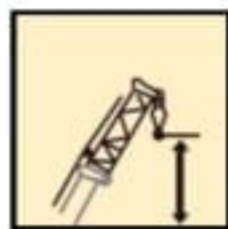
XCT25L5



25 t



42 m



50.2 m



XCT25L5广泛适用于建筑工地、城市改造、交通运输、港口、桥梁、油田、矿场等场所和其它复杂的作业环境

XCT25L5 Truck crane is widely used for the lifting operations in general engineering projects, such as construction site, urban renewal, communication and transportation, ports, bridge, oilfields and mine, and complex working environments.



XCT25L5

- 五节“U型”42米主臂，最大起重能力：25吨，最大起升高度：50.2米，最大工作半径：38.5米，性能全面领先
- 5-section boom of 42 m with U-type profile is adopted; the max. lifting load is 25 t; the max. lifting height is 50.2 m; the max. working radius is 38.5 m; The performance takes the lead comprehensively.
- 新型节能液压系统，效率高，耐用性强，微动性更好（起升：2.5m/min，回转：0.1°/s）
- New energy-saving hydraulic system with high efficiency, durability and fine control (lifting: 2.5m/min, slewing: 0.1°/s)
- 行业首创黄金传动链，越野能力强，油耗低，45%强劲爬坡能力
- Optimal transmission system first created in the industry contributes to strong off-road performance and low oil consumption; the grade-ability is 45%.



XCT25L5





XCT25L5



回转机构

Slewing mechanism

- 单排四点接触球外齿式回转支承，360度回转
- Single-row four-point ball contact external tooth slewing ring, may continuously slew 360°.
- 定量泵-低速大扭矩定量马达液压系统
- A constant displacement pump and a low speed large torque motor with mature slewing buffering technology adopted
- 具有动力控制或自由回转的功能，可无级调速
- Power control and free-sliding function are available, and speed may be infinitely regulated
- 回转速度为0-2.5r/min
- Slewing speed 0-2.5r/min



超强起重性能

Super lifting performance

- 行业最长五节 42 米 “U 型” 主臂，主吊钩最大 8 倍率，性能领先同类产品 20%，顺序伸缩升级为任意伸缩，臂长变换更高效，中长臂性能更高；
- 5-section boom of 42 m with U-type profile is the longest of the same class in the industry; the max. parts of line is 8 for the main hook block. The performance is 20% higher than that of the competitors. The telescoping mode is updated from sequential telescoping to random telescoping. The change of boom length is more efficient, and the performance of medium-long boom is higher;
- 创新单板臂头与紧凑式臂尾结构，搭接比行业最大，吊臂承载力更强。
- Innovative single-plate boom head and compact boom tail structure, best overlapping ratio in its class and stronger boom load-bearing capacity;



新型节能液压系统

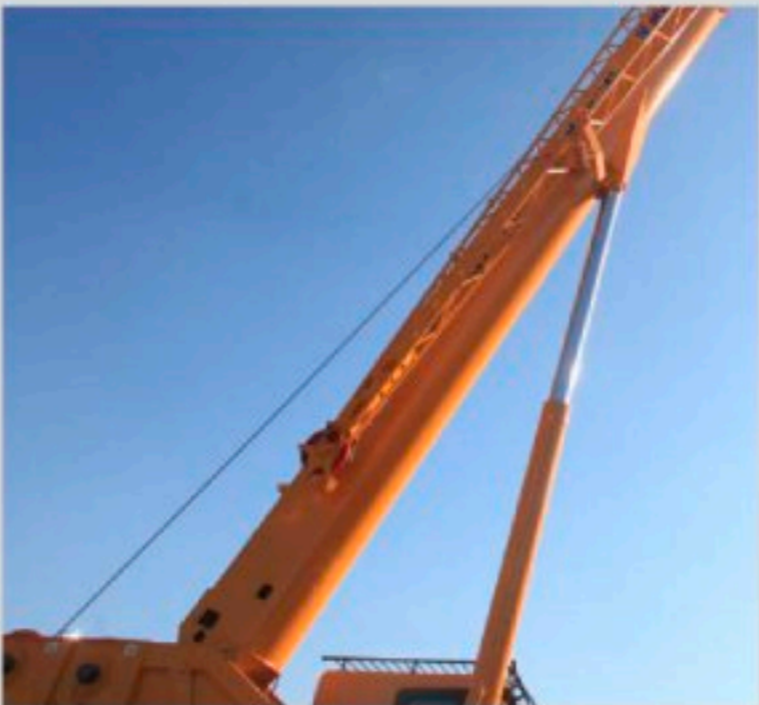
New energy-saving hydraulic system

- 回转最低稳定速度达到 0.1°/s，起升最低稳定速度（卷筒处）2.5m/min，起吊精准，更加适合精准吊装作业；
- The min. stable slewing speed is 0.1°/s. The min. stable lifting speed (drum) is 2.5m/min. Precise and safe lifting movements can be realized.
- 双泵分合流控制技术，复合动作性能行业最高，作业高效；
- Dual-pump separate and confluent control technology brings higher compound movement performance in the industry with higher working efficiency.
- 液压马达独立散热技术，液压系统热平衡温度在 80℃ 以下，高温环境下持续作业不停机，吊装作业安全可靠。
- Independent cooling technology of the hydraulic motor can make the thermal balance temperature of the hydraulic system below 80℃. It can work normally in the high temperature environment and thus the hoisting operation is safe and reliable.

起升机构

Hoisting mechanism

- 变量泵-定量马达开式液压系统
- The open winch hydraulic system consisting of variable displacement pumps and constant displacement motors
- 行星齿轮减速器、常闭式制动器
- Planetary gear reducer, normally closed brake
- 最大单绳拉力为30.625KN
- Max. single line pull 30.625KN
- 最大起升速度135m/min
- Max. hoisting 135m/min

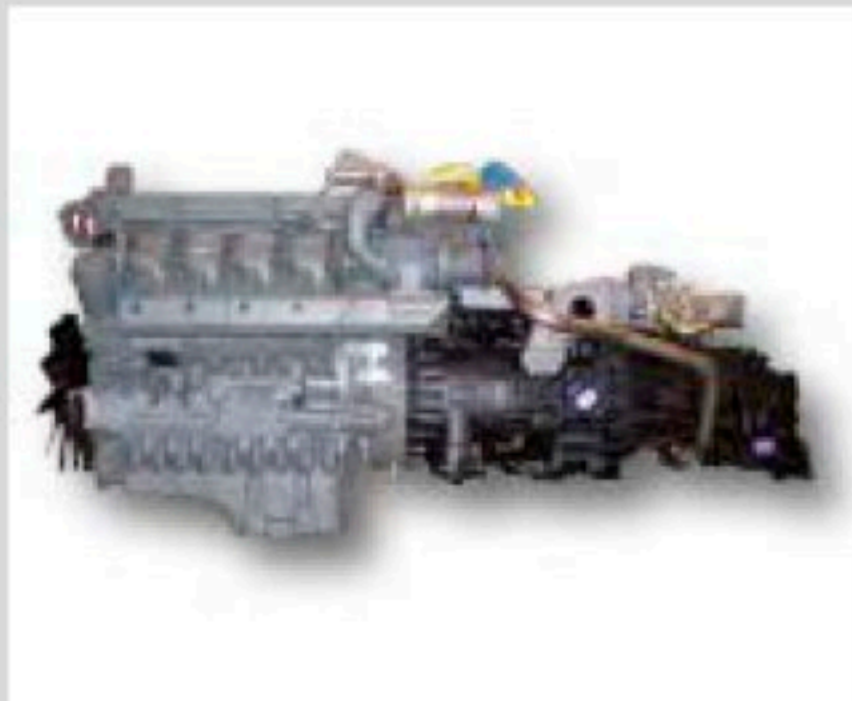


变幅机构

Elevating mechanism

- 单变幅油缸，可靠性高
- Single elevating cylinder, high reliability
- 使用带负载补偿功能的变幅平衡阀
- The elevating balance valve with load compensation function
- 采用平衡阀外控式重力+动力下降方式
- The external-controlled boom gravity fall combined with power lowering boom

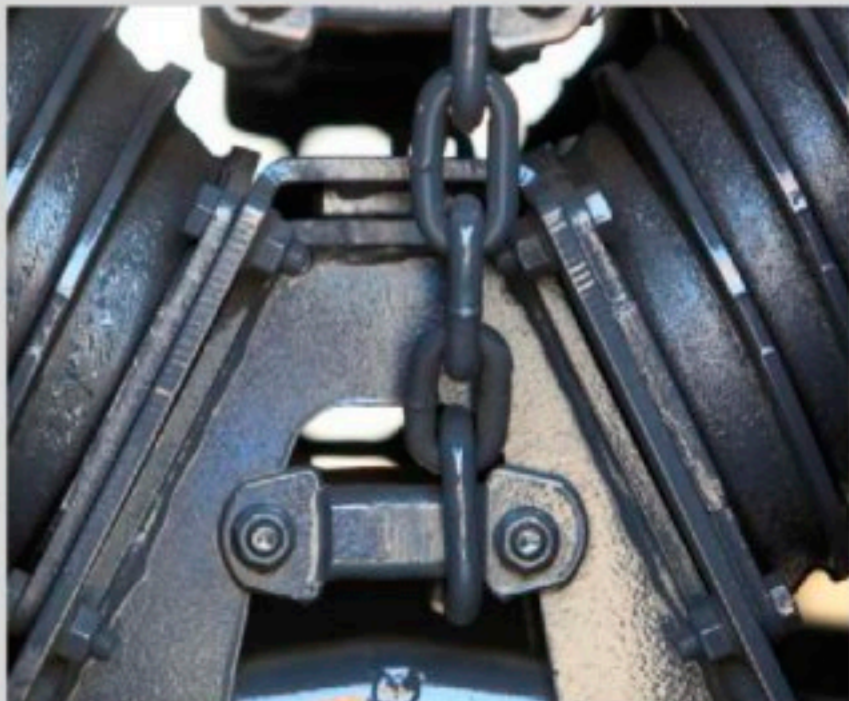
XCT25L5



动力传动系统

Drive train

- 上柴发动机，额定功率221kw，最大输出扭矩1400N.m
- Shanghai diesel engine, rated power 221kw, max. torque 1400N.m
- 陕齿机械变速箱，软轴操纵，全同步器
- Mechanical transmission made by Shanxi Gear Factory, with synchronizer. It is manually operated through flexible shaft.
- 最高车速90Km/h，最大爬坡能力45%
- Max. travel speed 90Km/h, Max. grade ability 45%





低速大扭矩动力传动系统

Low-speed large-torque power drive system

- 以低速大扭矩发动机和大速比、超速档变速箱为核心的全新动力平台，驱动性能强，承载能力高，稳定性好；
- The new power system consists of a low speed large torque engine and a transmission with high speed ratio and over drive contributes to strong driving performance, high load-bearing capacity and better stability.
- 实现了高动力性能与低油耗完美融合，行驶油耗降低12%，动力性能提高15%，作业状态综合油耗降低15%；
- Resulting in perfect combination of high power performance and low fuel consumption, i.e.12% reduction in fuel consumption for driving, 15% for operation, and 15% improvement in power performance.



悬挂系统

Suspension system

- 前悬架采用少片变截面钢板弹簧
- The front suspension consists of tapered cross-section and less leaf springs
- 后悬架采用橡胶悬架，V型推力杆
- The rear suspension consists of rubber suspension and V-type thrust bars,



制动系统

Pneumatic disc brake

- 脚踏板操纵的双回路气压制动。一轴为盘式制动器，二、三轴为鼓式制动器
- Foot pedal operated double-circuit air pressure brake. The disc brakes are used for the first axle, drum brakes are used for the 2nd and 3rd axles.
- 驻车制动：弹簧储能制动，作用于2、3轴车轮。
- Parking brake: spring energy brake, acting on wheels of 2,3 axles.
- 辅助制动：发动机排气制动、发动机缸内缓速制动
- Auxiliary brake : engine exhaust brake+ engine compression brake.

XCT25L5



工况自动规划技术 Automatic working condition planning technology

- 自动推荐最优工况
- Automatically recommend the most proper working conditions
- 简化查询与设置工况过程
- Searching and setting work condition simply





新型外观造型与人性化设计

New appearance and humanized design

- 新一代外观设计，整机刚劲有力，时尚的驾驶室与操纵室新外观，层次感与力量感完美结合；全面的人体工程学分析，人性化细节处理，打造驾驶轻松、操纵舒适，维护便捷的内在品质
- A new generation of appearance design makes the whole vehicle powerful and vigorous; Fashionable outlines of driver's cab and operator's cab bring perfect combination of sense of lays and sense of physical strength; ergonomics analysis and humanized details make inherent quality of easy driving comfortable operation and convenient maintenance

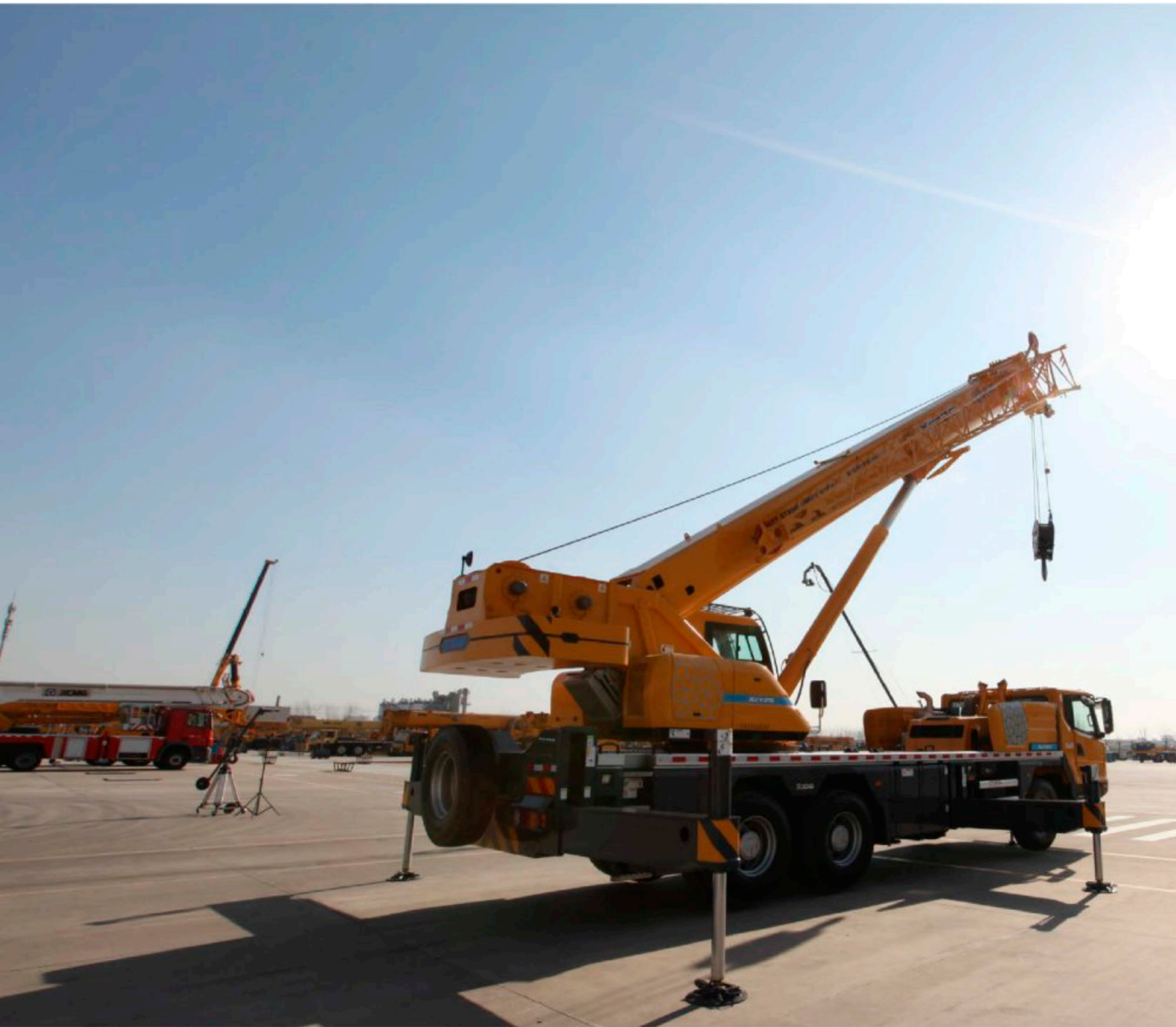


操纵室内即可完成回转锁止操作。
Slewing lock operation can be realized in the operator's cab.



便捷式穿绳系统，无需拆解楔套，穿绳时间由35min降低至18min；
A portable reeving system is installed to reduce the the reeving time from 35 min to 18 min due to no need to disassemble wedge socket.

XCT25L5



支腿伸缩软轴操纵
Soft shaft operation for
outrigger telescoping





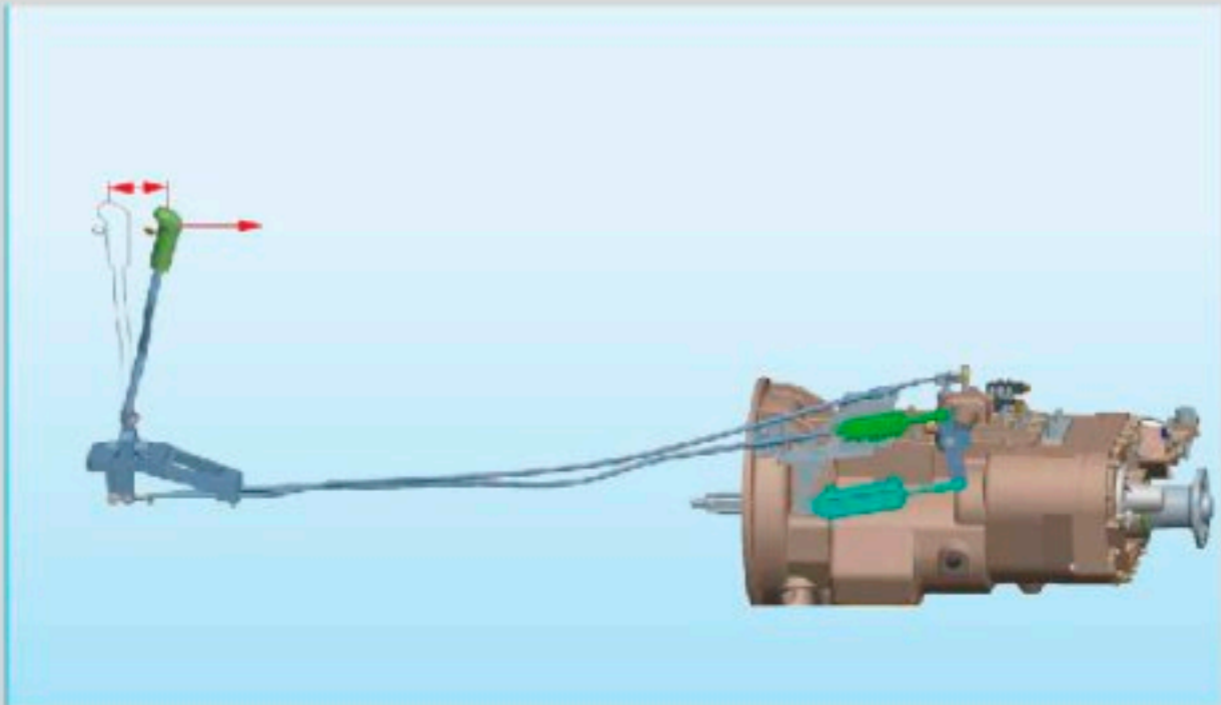
新型外观造型与人性化设计

New appearance and humanized design

- 电气系统可靠性升级，防水线束布局合理，易维修，寿命长；
- Electric system is updated reliably. The waterproof harness is in a reasonable layout. The maintenance is easier and the service life is longer;
- 全覆盖式走台板，铝合金型材，品质感强，独立式轮包，层次丰富；
- Fully covered aluminum alloy deck, strong sense of quality; independent wheel fender, sense of plentiful layers;
- 铝型材防护栏，表面质量高、防腐蚀能强；
- Guard rails made of aluminum alloy, high quality and strong anti-corrosion capacity;
- 全新人机设计把手和扶梯，精良考究工艺制造，攀爬方便可靠。
- Ergonomically designed hand holds and hand rails, made by fine manufacture process, convenient and reliable for climbing.



支腿作业灯夜间作业更安全
Outrigger working lamp
makes night work safer



助力换挡

Power boosted shifting

- 换挡力小，换挡行程短，
- Power boosted shifting with shorter shifting stroke and improved comfort.
- 即使系统出现故障，仍可进行正常机械换挡
- Even if fault occurs, mechanical shifting can still be realized

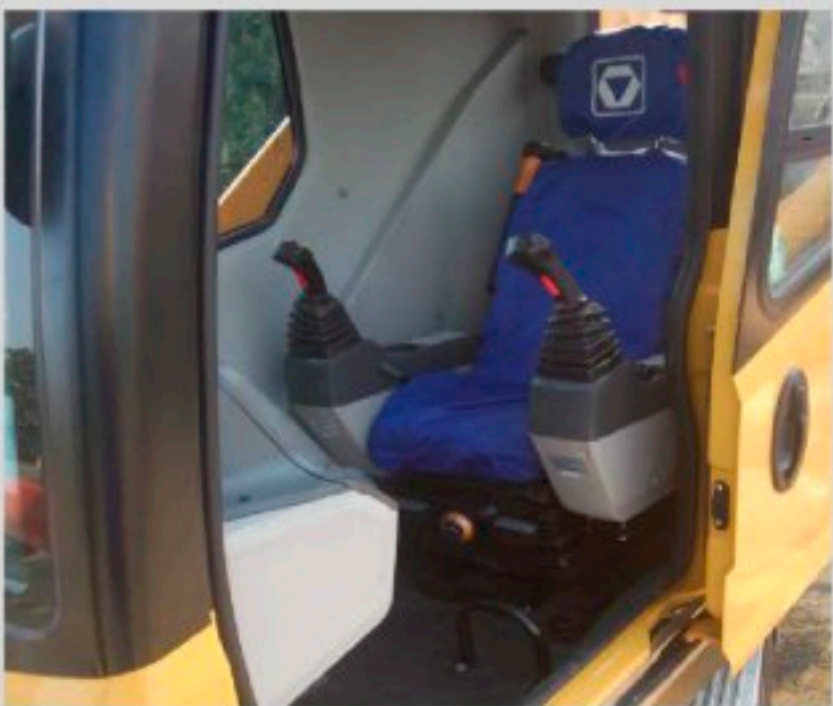
XCT25L5



驾驶室

Driver's cab

- 主驾气悬浮座椅，自动调节高度
- An air-floating seat designed for the driver is automatically adjustable in height
- 副驾双座椅，可展开为简易卧铺
- A double-seat designed for the co-driver may be used as a berth for rest.
- 标配冷暖空调
- Reverse image heater and air conditioner are standard





徐工人机交互系统

XCMG man-machine interactive system

- 行业首发，用轿车级别的人机交互系统，实现了操作人员与车辆的友好对话。轻松掌控车辆行驶、起重作业的各种状态信息，操纵更轻松、便捷
- First launched in the industry man-machine interactive system with the level of a car achieves friendly conversation between operator and crane. Information of every state in driving and lifting operation is administered easily which makes operation easier and more convenient.



操纵室

Operator's cab

- 全人机工学工作空间设计,作业更舒适，安全
- Ergonomically designed working space makes operation safer and more comfortable
- 7.0寸真彩色触摸屏
- 7.0 inch color touch screen displays



- 安全保护、吊装动作、操纵环境三个区域,控制便捷
- Three control areas for safely protection, hoisting operation and operating environment bring convenient control